

**CITY OF GREEN ISLE  
ORDINANCE 2022-05**

**AN ORDINANCE AMENDING ORDINANCE 2022-03, THE CITY OF GREEN ISLE ZONING ORDINANCE, BY REPEALING AND REPLACING THE OFFICIAL ZONING MAP UNDER SECTION 4, SUBDIVISION 1.**

- I. THE CITY COUNCIL OF THE CITY OF GREEN ISLE, MINNESOTA TO PROMOTE THE PUBLIC SAFETY, HEALTH, AND WELFARE, HEREBY ORDAINS SECTION 4, SUBDIVISION 1 OF ORDINANCE 2022-03, THE OFFICIAL ZONING MAP SHALL BE REPEALED AND REPLACED WITH THE ATTACHED MAP.
- II. EFFECTIVE DATE. This Ordinance is effective upon its adoption and publication as prescribed by law.

This ordinance shall become effective immediately upon publication

---

Joseph Kreger, Mayor

Attest:

---

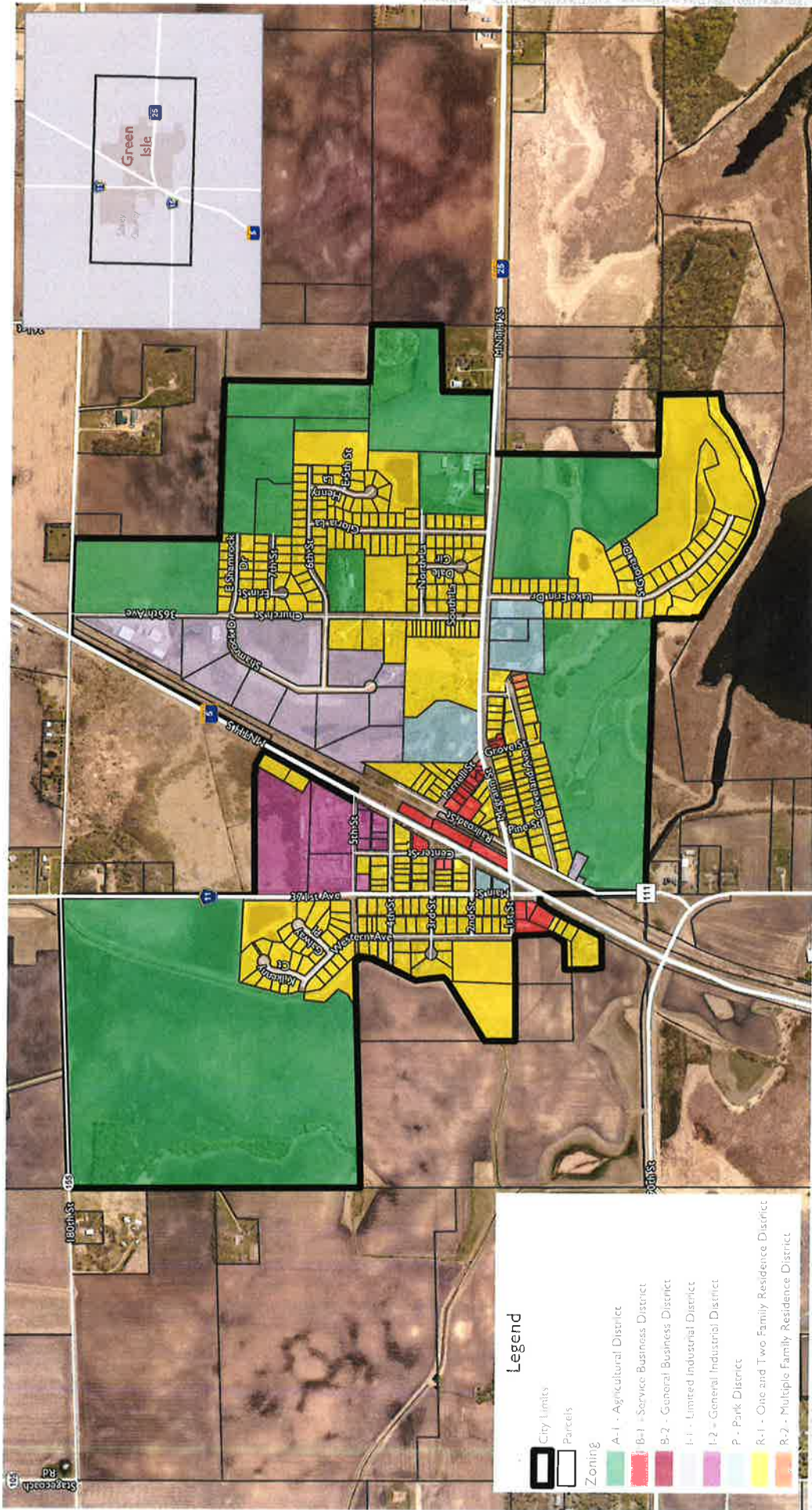
Diane Hatlestad, City Clerk

First Reading: 8/23/2022

Second Reading: 9/13/22

Adopted: 9/13/22

Published: 9/22/22



**Legend**

- City Limits
- Parcels
- Zoning**
  - A-1 - Agricultural District
  - B-1 - Service Business District
  - B-2 - General Business District
  - I-1 - Limited Industrial District
  - I-2 - General Industrial District
  - P - Park District
  - R-1 - One and Two Family Residence District
  - R-2 - Multiple Family Residence District



**Zoning Map**  
 City of Green Isle  
 Sibley County Minnesota

Source: City of Green Isle, Sibley County, Minnesota  
 Project: Zoning Ordinance 2017  
 City Limits (Revised 2017)

